



FEDERAL

THE WEATHER SPHERE BRINGS UNIVERSITY, FEDERAL, STATE AND PRIVATE INDUSTRY TOGETHER.

NOAA National Weather Service Norman Forecast Office

Forecasters at the National Weather Service Forecast Office (WFO) in Norman, Oklahoma prepare and disseminate life-saving warnings, watches and advisories for all types of hazardous weather conditions for more than two million citizens across 56 counties in central, western and southern Oklahoma and western north Texas.

The Norman WFO is responsible for issuing a variety of warnings for the protection of life and property, ranging from tornado and severe thunderstorms, to ice storms and blizzards, to high wind, flash flood and extreme heat/cold.

A team of forecasters also produces a wide variety of forecasts, including aviation and fire weather forecasts, and collects and disseminates climatological and hydrologic data and observations.

The office works closely with other agencies, first responders and the media to ensure critical weather information is available when and where it is needed. This means around the clock, every day of the year.

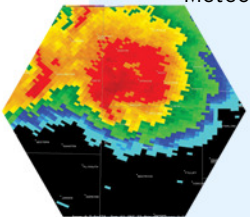
On average, about 50 tornadoes occur in the Norman WFO's county warning area each year. Historically, a violent (F4-F5) tornado occurs in the area about every three years, the highest average of anywhere in the United States.

The office was established in Oklahoma City in 1890 and moved to Norman in 1987. It is part of the Southern Region of the National Weather Service and is one of 122 local forecast offices serving the nation.



"The Norman Forecast Office is the primary federal agency charged with providing life-saving warnings and forecasts for your community in times of emergency. We are trained to handle severe weather specific to where you live."

Mike Foster
Meteorologist-in-Charge



National Weather Center
120 David L. Boren Blvd.
Suite 2400
Norman, OK 73072

Phone: 405.325.3404
Fax: 405.325.0901



www.weather.gov/norman
www.weathersphere.org

NOAA is supportive of collaboration throughout the environmental information enterprise, as described in the NOAA Policy on Partnerships in the Provision of Environmental Information, and in this context, NOAA is supportive of the collaborative framework established in the National Weather Center facility and across the University Research Campus in Norman, Oklahoma. However, NOAA supports collaborative relationships with all members of the nation's environmental information enterprise – NOAA's collocation with the University of Oklahoma Weather and Climate programs and other participants in "The Weather Sphere" should not be taken as implying a special relationship with these participants.

