



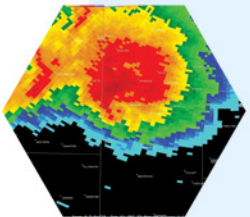
# FEDERAL

THE WEATHER SPHERE BRINGS UNIVERSITY, FEDERAL, STATE AND PRIVATE INDUSTRY TOGETHER.



“CIMMS links the scientific and technical resources of NOAA and OU to create a center of excellence in mesoscale meteorology and regional climate studies.”

Peter Lamb  
Director



National Weather Center  
120 David L. Boren Blvd.  
Suite 2100  
Norman, OK 73072

Phone: 405.325.3041  
Fax: 405.325.3098



[www.cimms.ou.edu](http://www.cimms.ou.edu)  
[www.weathersphere.org](http://www.weathersphere.org)

## Cooperative Institute for Mesoscale Meteorological Studies

The Cooperative Institute for Mesoscale Meteorological Studies (CIMMS) is an international center of excellence where government and academic scientists work together to learn about and apply their knowledge of mesoscale weather systems and regional-scale climate processes.

With significant focus on weather radar, CIMMS concentrates its efforts on basic convective and mesoscale research, forecast improvements, climatic effects of mesoscale processes, socioeconomic impacts of mesoscale weather systems and regional-scale climate variations, Doppler weather radar research and development, and climate change monitoring and detection.

CIMMS research contributes primarily to serve society's need for weather and water information and to understand climate variability and change to enhance society's ability to plan and respond. CIMMS improves observation, analysis, understanding and prediction of weather and climate systems.

This understanding provides the foundation for accurate prediction of hazardous weather and regional climate. Better prediction of weather and climate contributes to improved decision-making, resulting in the enhancement of social and economic welfare.

*cimms*

NOAA is supportive of collaboration throughout the environmental information enterprise, as described in the NOAA Policy on Partnerships in the Provision of Environmental Information, and in this context, NOAA is supportive of the collaborative framework established in the National Weather Center facility and across the University Research Campus in Norman, Oklahoma. However, NOAA supports collaborative relationships with all members of the nation's environmental information enterprise – NOAA's collocation with the University of Oklahoma Weather and Climate programs and other participants in "The Weather Sphere" should not be taken as implying a special relationship with these participants.