



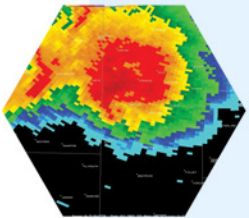
# UNIVERSITY

THE WEATHER SPHERE BRINGS UNIVERSITY, FEDERAL, STATE AND PRIVATE INDUSTRY TOGETHER.



“CAPS is a pioneer and world leader in storm-scale data assimilation and numerical weather prediction and actively collaborates with faculty and scientists in the Weather Sphere.”

Ming Xue  
Director



National Weather Center  
120 David L. Boren Blvd.  
Suite 2500  
Norman, OK 73072

Phone: 405.325.0453  
Fax: 405.325.7614



[www.caps.ou.edu](http://www.caps.ou.edu)  
[www.weathersphere.org](http://www.weathersphere.org)

## Center for Analysis and Prediction of Storms

The Center for Analysis and Prediction of Storms (CAPS) was established in 1989 as one of the first National Science Foundation Science and Technology Centers. Its primary mission is to develop and demonstrate techniques for computer-based analysis and prediction of high-impact local weather and environmental conditions. CAPS research also includes mesoscale and convective-scale dynamics and predictability.

A key product of CAPS is the multi-scale Advanced Regional Prediction System and its associated advanced data assimilation systems, which are used worldwide. CAPS also contributes to the development of the community Weather Analysis and Forecasting model.

With research funding from essentially all federal funding agencies associated with weather research, CAPS manages and conducts a broad-based program of basic and applied research. It also collaborates with the private sector on funding opportunities.

CAPS provides a venue for exploring bold new ideas, attracting the best scientists and students, and facilitating the transfer of knowledge and technology to academia, government and industry. It currently supports about 10 full-time research scientists and about 15 graduate students, performing leading-edge research related to its mission.

